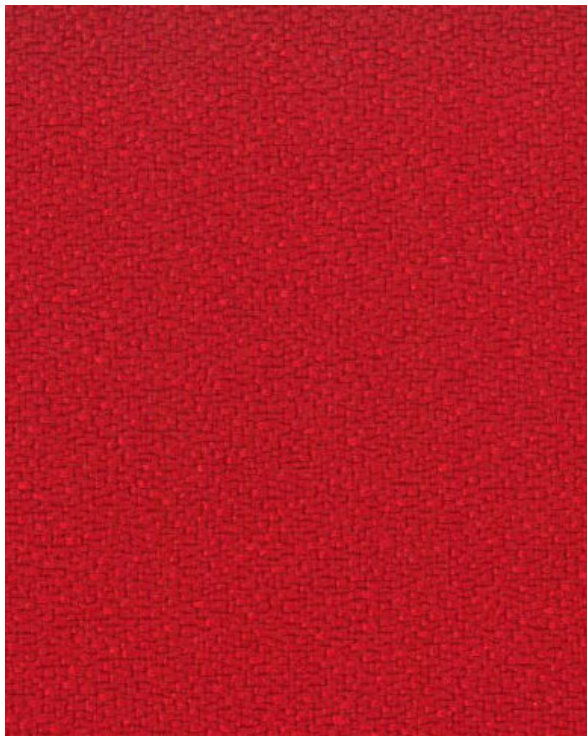
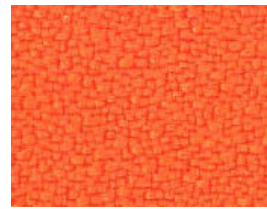


Fiesta - Screen/Upholstery

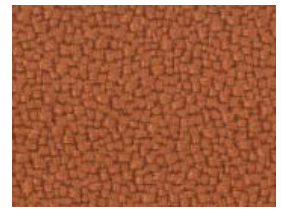
at work*
with
Instyle



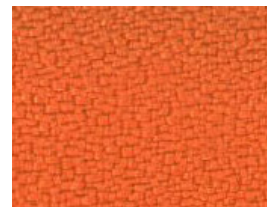
Flame



Orange



Burnt Orange



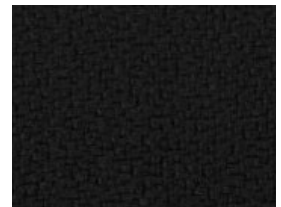
Diego Orange



Wine



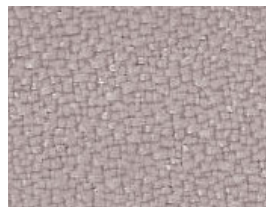
Magenta



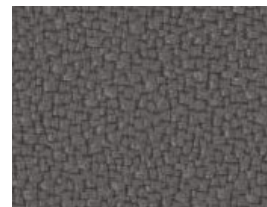
Black



Buff



Mocha



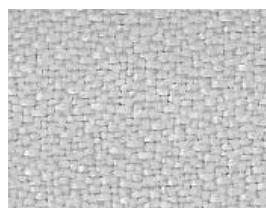
Planet



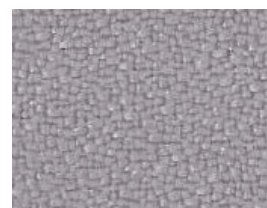
Graphite



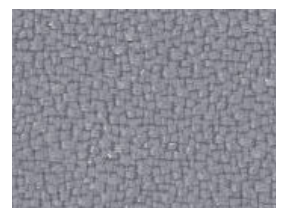
Putty



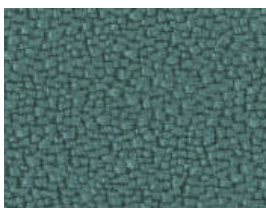
Dove



Steel



Clouds



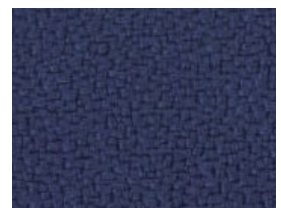
Fern



Waterfall



Gungrey



Indigo



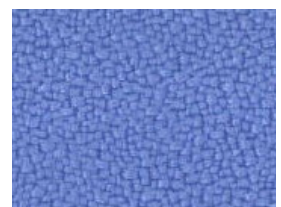
Leaf



Lime



Azure



Cornflower

Fiesta

| | |
|-------------|---------------------------|
| Width | 170cm |
| Composition | 100% Polyester |
| Roll size | 50m approx |
| Abrasion | 75,000 Martindale Rubs |
| Use | Screen, Upholstery |
| Fire Test | AS1530 Part 3 |
| Qualities | Soil repellency treatment |

Colour Variations: All textiles are subject to some colour variation.
Fabric supplied to customer order will be within commercial tolerance.

CTA Performance Rating: Tests conducted by independent testing laboratories indicate that FIESTA met or exceeded the performance guidelines for Screen and Heavy Duty Commercial Fabric Use as determined by the CTA (Commercial Textile Association of Australia and New Zealand).

Fabric Care: Do not remove any part for separate cleaning. Protect from direct sunlight. Vacuum regularly using low suction. Rotate reversible cushions regularly. Professional cleaning recommended.

*Tel: +64 9 368 5768 / Fax: +64 9 368 5769 / Email: info@textilia.co.nz / Web: textilia.co.nz / *at work is a brand of Textilia*



Commercial Textile Association
of Australia & New Zealand Limited.



Commercial Textile Association
Performance Rating.



Commercial Textile Association
Performance Rating.